

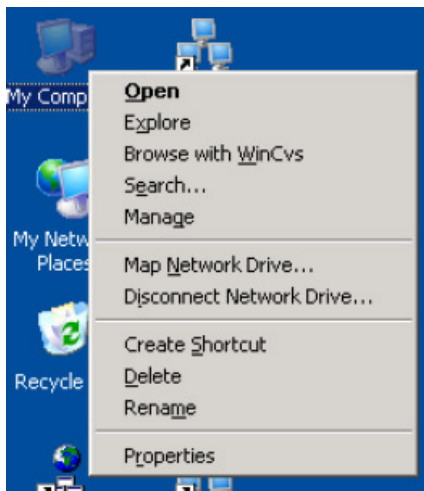


Creating a System Variable to run Exchange backups

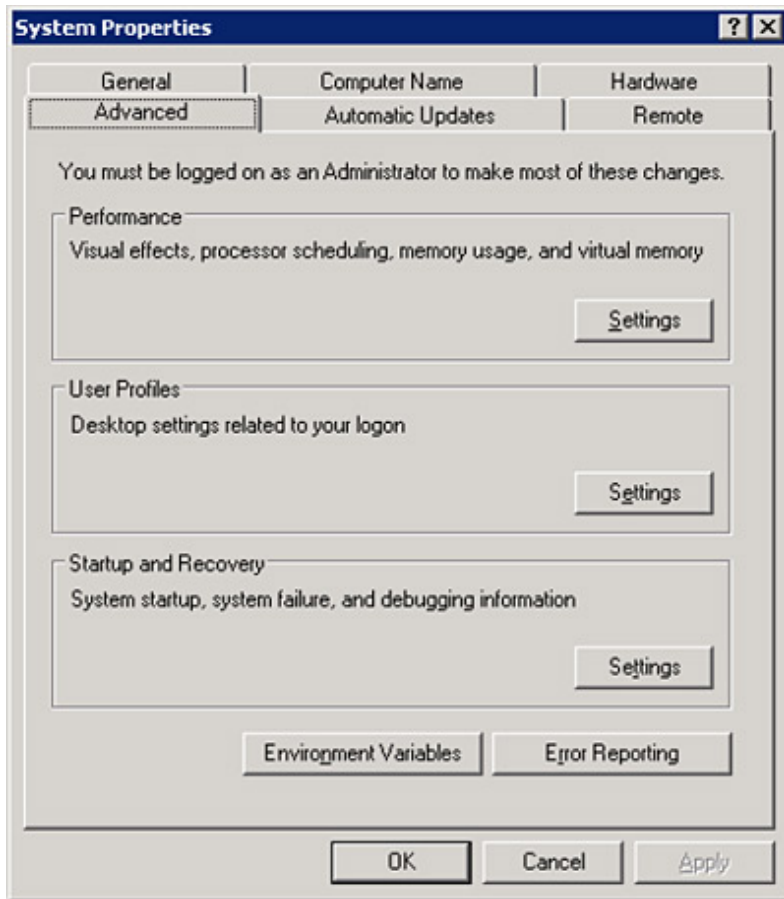
This guide will help you with performing an Exchange Brick Level backup and it results in this error message.

_ Please include the following path in your environment variables : <exchange server folder > \bin _

1. Right Click My Computer
2. Click Properties from the Context Menu.



3. Click on Advanced Tab



4. Click on Environment Variables Button (On the bottom)

